






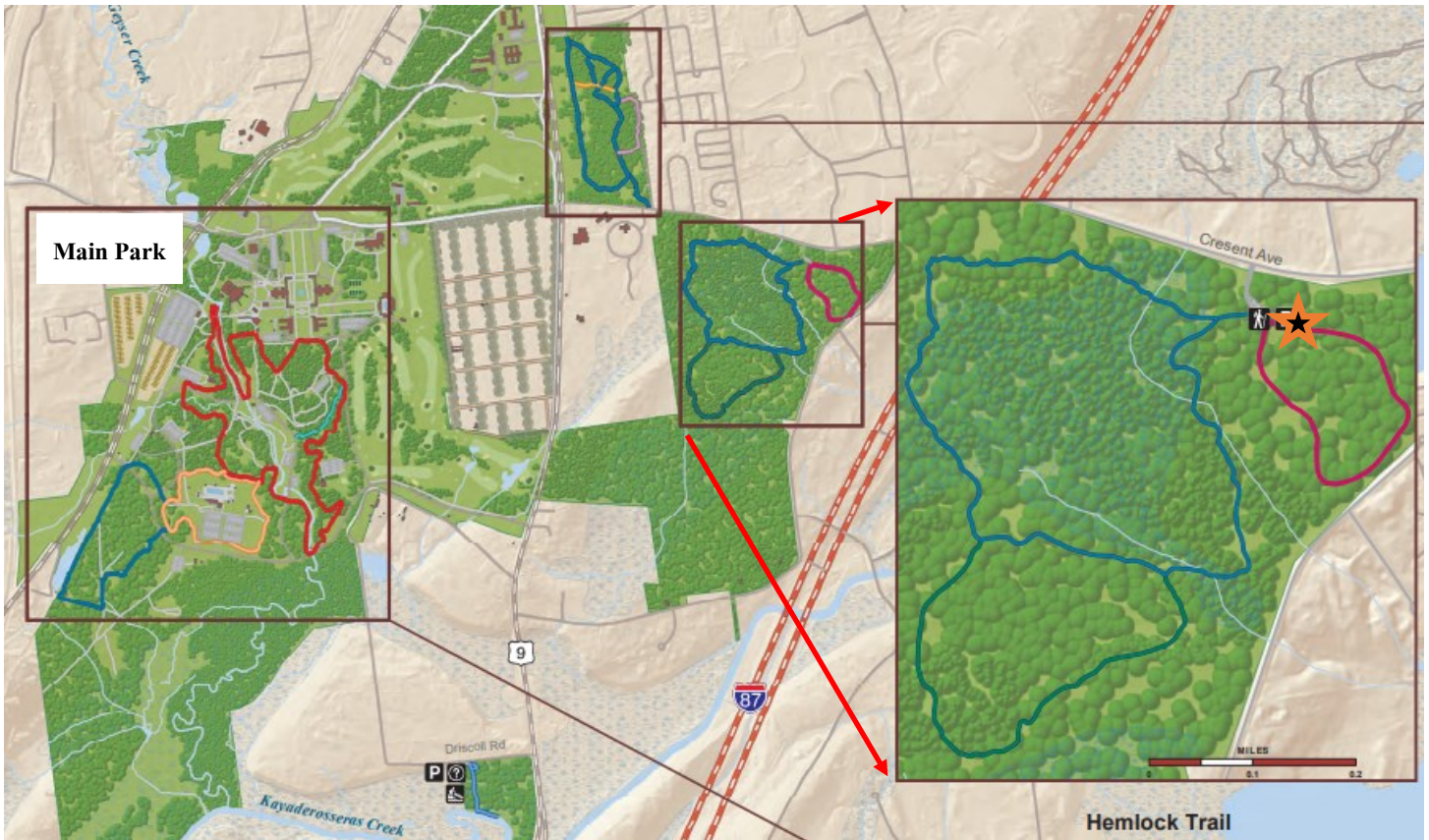
Saratoga Spa State Park Priority Areas for Invasive Species Management

Prepared for the Friends of Saratoga Spa Park



-  **Peerless Loop:** Buckthorn, bittersweet, honeysuckle, multiflora rose, and barberry
-  **Wetlands Loop:** Buckthorn, bittersweet, and barberry
-  **Geyser/Creekside :** Knotweed along streamside has been cut and will need leaves stripped from stems in months of April, June, & September.
-  **Geyser Trail– Hayes Spring to Orenda Pavillion:** Barberry and bittersweet
-  **North South Rd/ Avenue of the Pines:** Cutting bittersweet vines from the trees

** See page 2 for an additional site: Hemlock Trail (located on Crescent Rd. off of Route 9) **



Hemlock Trail : Bittersweet and honeysuckle are two common invasives that can be removed from this trail.

Directions to Hemlock Trail from the Main Park: Exit the park via Avenue of the Pines toward Route 9. Take a right turn at the stoplight onto Route 9. At the next stoplight take a left onto Crescent Ave. There will be a parking lot for the Hemlock Trail on your right.